

Henry Ford Health

## Henry Ford Health Scholarly Commons

---

2024 Nursing Research Conference

Nursing Research Conference

---

9-24-2024

### Answer the Call: Translational Scientific Inquiry through Research and Evidence Based Practice

Nutrena H. Tate

Henry Ford Health, ntate7@hfhs.org

Follow this and additional works at: <https://scholarlycommons.henryford.com/nursresconf2024>

---

#### Recommended Citation

Tate, Nutrena H., "Answer the Call: Translational Scientific Inquiry through Research and Evidence Based Practice" (2024). *2024 Nursing Research Conference*. 2.

<https://scholarlycommons.henryford.com/nursresconf2024/2>

This Poster is brought to you for free and open access by the Nursing Research Conference at Henry Ford Health Scholarly Commons. It has been accepted for inclusion in 2024 Nursing Research Conference by an authorized administrator of Henry Ford Health Scholarly Commons.

**NUTRENA TATE**

PHD, MBA, APRN, CPNP-PC

SYSTEM DIRECTOR,  
NURSING RESEARCH

**ANSWER THE CALL:  
TRANSLATIONAL SCIENTIFIC  
INQUIRY THROUGH  
RESEARCH  
AND EVIDENCE BASED  
PRACTICE**

Henry Ford Hospital Annual Nursing Research Conference  
September 24, 2024



**ANSWER THE  
CALL...**

To understand your unique contribution to nursing science through research and evidence based practice.

**SESSION  
OBJECTIVE**

**WHAT WERE YOUR THOUGHTS ABOUT  
'NURSING RESEARCH' WHEN YOU FIRST  
HEARD ABOUT IT?**

**NURSING RESEARCH DEVELOPS  
KNOWLEDGE ABOUT HEALTH AND THE  
PROMOTION OF HEALTH OVER THE FULL  
LIFESPAN, CARE OF PERSONS WITH  
HEALTH PROBLEMS AND DISABILITIES**

**WHY IS  
RESEARCH  
IMPORTANT  
TO  
NURSING?**



# NURSING RESEARCH IS A SCIENCE AND ART

- Informs every aspect of nursing, from how to ensure patient safety to incorporating technology into bedside care
- Establishes nursing as a profession
- Ensures quality, standardized, and efficient care
- Advances treatment techniques
- Promotes positive patient outcomes
- Reduces health care costs by preventing complications
- Shapes health policy and healthcare models





**IT ALL STARTS  
WITH A  
QUESTION....**

# TYPES OF SCIENTIFIC INQUIRY



RESEARCH



EVIDENCE BASED  
PRACTICE

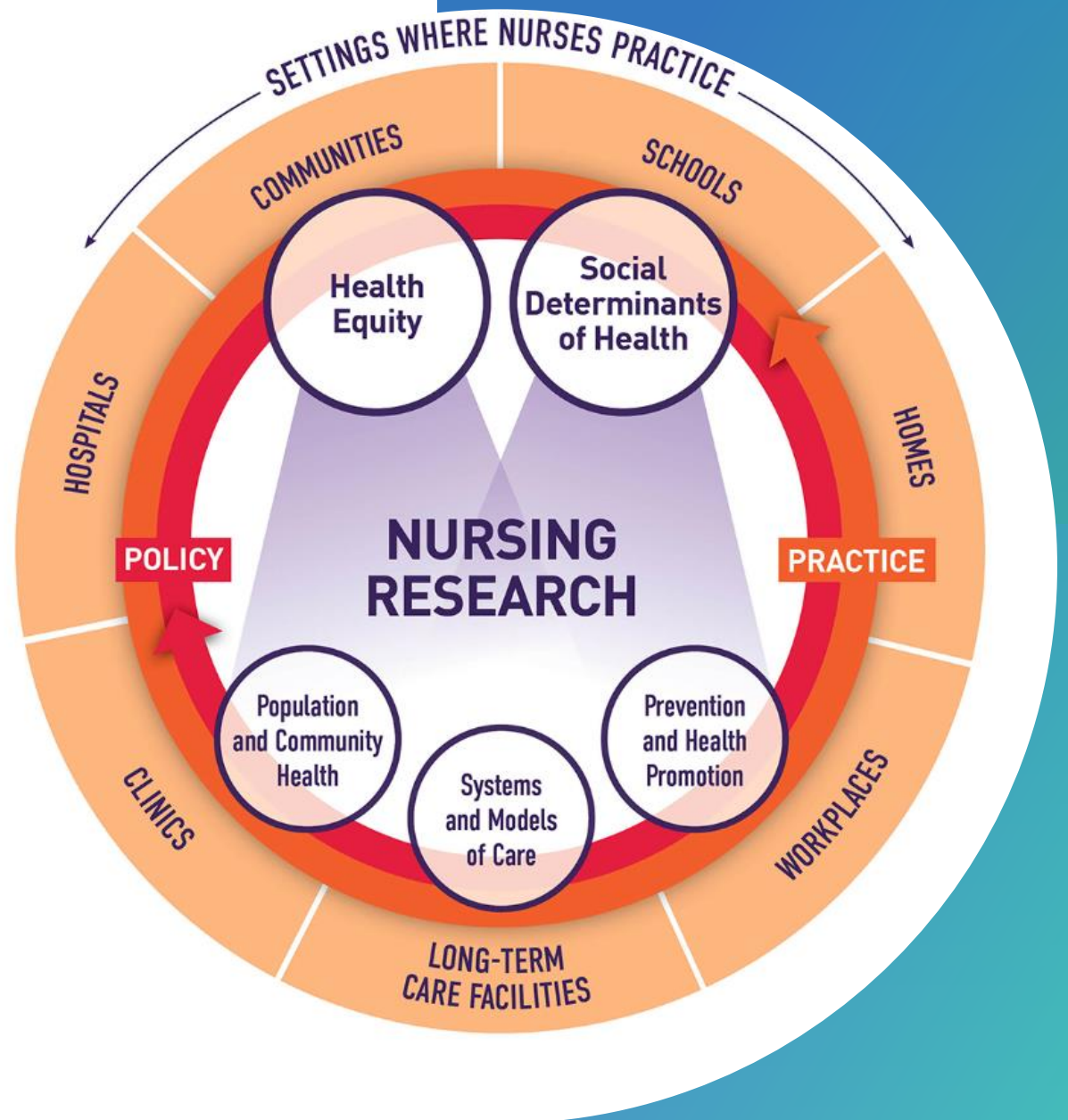


QUALITY  
IMPROVEMENT



PROGRAM  
DEVELOPMENT AND  
EVALUATION

# NATIONAL INSTITUTE OF NURSING RESEARCH (NINR)





**BEST PRACTICES TO  
SUPPORT NURSE  
RESEARCH AND  
SCIENTIFIC INQUIRY  
WITHIN HOSPITAL  
SETTINGS**

# **NURSE'S FORMAL ROLE IN SCIENTIFIC INQUIRY**

# THE CALL: ARE YOU A GENERATOR, TRANSLATOR, IMPLEMENTER?



Generator



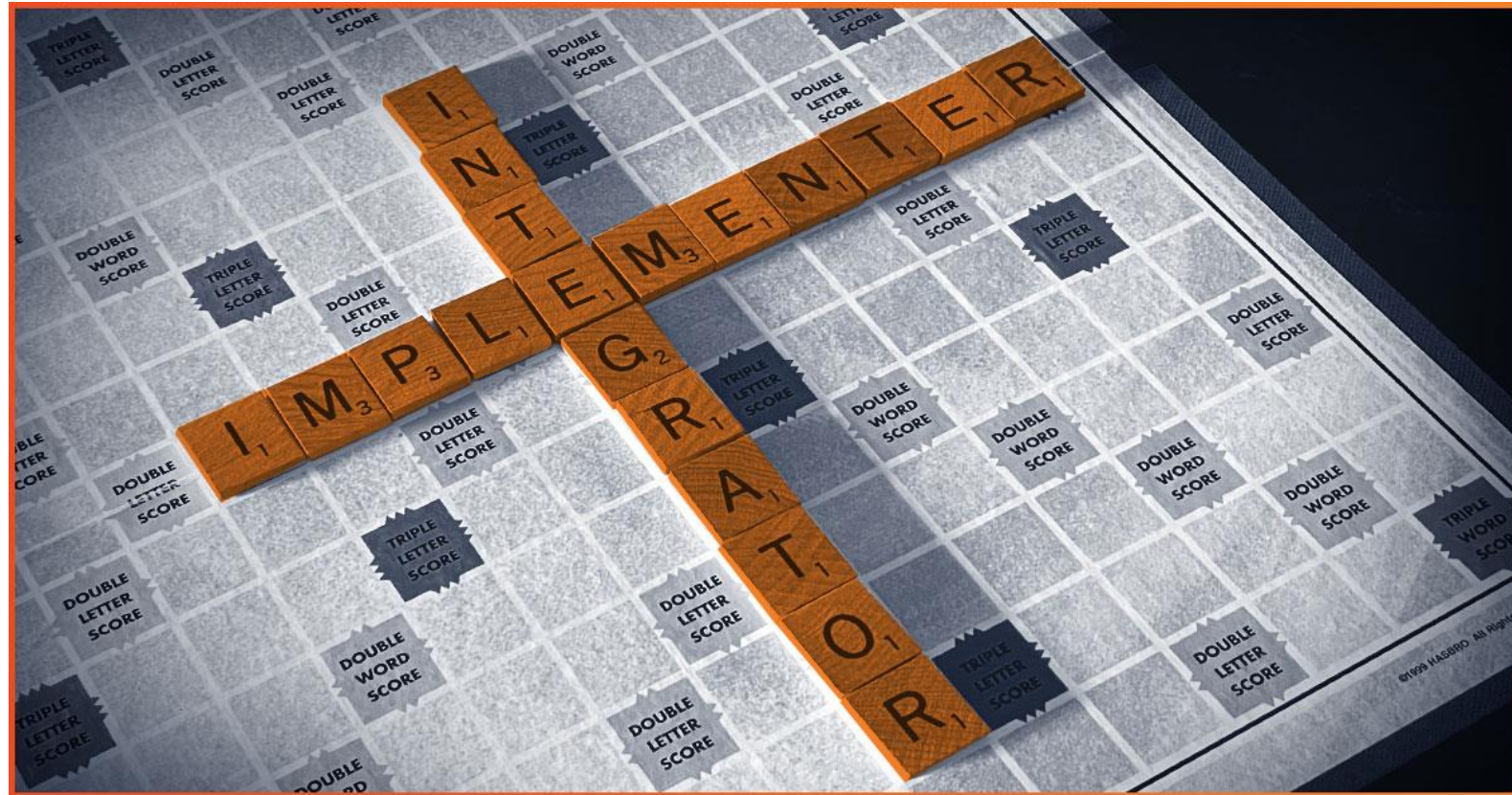
Translator



Implementer



# THE INTEGRATOR...





# SELF REFLECTION

WHAT IS YOUR  
UNIQUE  
CONTRIBUTION TO  
NURSING SCIENCE  
THROUGH RESEARCH  
AND EVIDENCE BASED  
PRACTICE?



# ANSWER THE CALL



# IN SUMMARY

**CALLING OUT AROUND THE WORLD  
ARE YOU READY FOR A BRAND NEW BEAT?  
SUMMER'S HERE AND THE TIME IS RIGHT  
FOR DANCING IN THE STREET.**

**- MARTHA REEVES -**

**THANK YOU!**

**NUTRENA TATE  
NTATE7@HFHS.ORG**

