

Henry Ford Health System

## Henry Ford Health System Scholarly Commons

---

Internal Medicine Articles

Internal Medicine

---

3-22-2021

### **Characteristics and comparative clinical outcomes of prisoner versus non-prisoner populations hospitalized with COVID-19**

Ahmed M. Altibi

Bhargava Pallavi

Hassan Liaqat

Alexander A. Slota

Radhika Sheth

*See next page for additional authors*

Follow this and additional works at: [https://scholarlycommons.henryford.com/internalmedicine\\_articles](https://scholarlycommons.henryford.com/internalmedicine_articles)

---

---

**Authors**

Ahmed M. Altibi, Bhargava Pallavi, Hassan Liaqat, Alexander A. Slota, Radhika Sheth, Lama N. Al Jebbawi, Matt E. George, Allison LeDuc, Enas Abdallah, Luke R. Russell, Saniya Jain, Nariné Shirvanian, Ahmad Masri, and Vivek Kak

---



OPEN

## Characteristics and comparative clinical outcomes of prisoner versus non-prisoner populations hospitalized with COVID-19

Ahmed M. Altibi<sup>1,2</sup>, Bhargava Pallavi<sup>3</sup>, Hassan Liaqat<sup>1</sup>, Alexander A. Slota<sup>1</sup>, Radhika Sheth<sup>1</sup>, Lama Al Jebbawi<sup>1</sup>, Matthew E. George<sup>4</sup>, Allison LeDuc<sup>1</sup>, Enas Abdallah<sup>1</sup>, Luke R. Russell<sup>1</sup>, Saniya Jain<sup>5</sup>, Nariné Shirvanian<sup>1</sup>, Ahmad Masri<sup>6</sup> & Vivek Kak<sup>1✉</sup>

Prisons in the United States have become a hotbed for spreading COVID-19 among incarcerated individuals. COVID-19 cases among prisoners are on the rise, with more than 143,000 confirmed cases to date. However, there is paucity of data addressing clinical outcomes and mortality in prisoners hospitalized with COVID-19. An observational study of all patients hospitalized with COVID-19 between March 10 and May 10, 2020 at two Henry Ford Health System hospitals in Michigan. Clinical outcomes were compared amongst hospitalized prisoners and non-prisoner patients. The primary outcomes were intubation rates, in-hospital mortality, and 30-day mortality. Multivariable logistic regression and Cox-regression models were used to investigate primary outcomes. Of the 706 hospitalized COVID-19 patients (mean age  $66.7 \pm 16.1$  years, 57% males, and 44% black), 108 were prisoners and 598 were non-prisoners. Compared to non-prisoners, prisoners were more likely to present with fever, tachypnea, hypoxemia, and markedly elevated inflammatory markers. Prisoners were more commonly admitted to the intensive care unit (ICU) (26.9% vs. 18.7%), required vasopressors (24.1% vs. 9.9%), and intubated (25.0% vs. 15.2%). Prisoners had higher unadjusted inpatient mortality (29.6% vs. 20.1%) and 30-day mortality (34.3% vs. 24.6%). In the adjusted models, prisoner status was associated with higher in-hospital death (odds ratio, 2.32; 95% confidence interval (CI), 1.33 to 4.05) and 30-day mortality (hazard ratio, 2.00; 95% CI, 1.33 to 3.00). In this cohort of hospitalized COVID-19 patients, prisoner status was associated with more severe clinical presentation, higher rates of ICU admissions, vasopressors requirement, intubation, in-hospital mortality, and 30-day mortality.

In 2016, there were nearly 2.2 million incarcerated individuals in U.S. correctional facilities. Incarcerated individuals are among the most vulnerable for the outspread of infectious diseases due to restricted mobility, overcrowding, confined spaces, limited resources and inequitable access to healthcare services<sup>1,2</sup>. The first known case of Coronavirus Disease 2019 (COVID-19) in a U.S. prison occurred in mid-March at the Rikers Island Correctional Facility of New York City. Within few weeks, over 200 cases were diagnosed despite all efforts to curb its spread within the facility<sup>2</sup>. Since then, the outspread of COVID-19 in U.S. prisons continued to rampage, with no sign of a respite<sup>3</sup>. As of October 6, 2020, at least 143,243 inmates in U.S. prisons were reported to have tested positive for COVID-19 and 1210 died<sup>3</sup>. Nationwide estimates for COVID-19 infection rates among prisoners are five times higher than in general population<sup>3,4</sup>. Despite this mortifying public health crisis, current federal and state-level healthcare policies failed to respond adequately in a manner that would lead to “flattening the curve” in U.S. prisons<sup>1</sup>.

<sup>1</sup>Department of Internal Medicine, Henry Ford Allegiance Hospital, Henry Ford Health System, 205 N East Ave, Jackson, MI 49201, USA. <sup>2</sup>Harvard T.H. Chan School of Public Health, Harvard University, Boston, MA, USA. <sup>3</sup>Department of Internal Medicine, Division of Infectious Diseases, Henry Ford Hospital, Detroit and West Bloomfield, MI 48322, USA. <sup>4</sup>Division of Hospital Medicine, Henry Ford West Bloomfield, West Bloomfield, MI 48322, USA. <sup>5</sup>Michigan State University College of Osteopathic Medicine, Lansing, MI 48824, USA. <sup>6</sup>Knight Cardiovascular Institute, Oregon Health and Science University, Portland, OR 97239, USA. ✉email: vkak1@hfhs.org

In the absence of an effective vaccine, physical distancing strategies remain the most effective mitigative measure to halt the rate of COVID-19 spread. Such strategies were demonstrated to be effectual during the Spanish influenza pandemic when early, sustained, and sweeping imposition of public gathering restrictions in the 1918 managed to cease the flu's death toll in cities across America<sup>5</sup>. Yet, in situations where practicing physical distancing was not attainable, infection rates and mortality statistics can be astounding—as was seen on cruise ships (*Diamond Princes* cruise ship) and nursing home facilities<sup>6</sup>. Similarly, physical distancing is practically impossible in the setting of incarceration unless major shift in policies occurs. This challenge has led some local authorities in the U.S to adopt depopulation measures to decrease the number of incarcerated individuals in prisons.

The State of Michigan has been a hotbed for COVID-19 spread among prisoners. With a total of 24,000 documented cases as of January 2021, Michigan ranks third across the nation with the number of COVID-19 cases per 10,000 prisoners<sup>3</sup>. Michigan Department of Correction has adopted a strategy of universal nasopharyngeal swab testing for Severe Acute Respiratory Syndrome Coronavirus-2 (SARS-CoV-2) for all prisoners aiming to identify asymptomatic carriers. By the end of May, 2020, a total of 38,130 prisoners have been tested and 3,982 (10.4%) were positive for SARS-CoV-2<sup>7</sup>. Clinical data about outcomes of prisoners with COVID-19 are lacking. In this study, we sought to report on the characteristics and clinical outcomes of prisoners hospitalized with COVID-19 as compared to non-prisoners.

## Methods

**Study design, settings, and population.** This was a retrospective cohort study of all consecutive patients hospitalized between March 10 and May 10, 2020 and tested positive for SARS-CoV-2 on qualitative polymerase chain-reaction (PCR) assay at two Henry Ford Health System hospitals. Patients evaluated at the emergency department without being hospitalized were excluded. The first admission with COVID-19 was considered as the index admission; data was extracted from the index admission while data from readmissions were disregarded. The study was reviewed and approved by Henry Ford Health System (HFHS) Institutional Review Board (IRB). Patients included in the study were those hospitalized at two Henry Ford hospitals (i) Henry Ford Allegiance Health: 475-bed hospital located in Jackson county, Michigan and (ii) Henry Ford West Bloomfield: 200-bed hospital located in Oakland county, Michigan. Admission criteria and treatment protocols were similar at both hospitals based upon healthcare system's COVID-19 management guidelines.

**Data collection.** We collected patient-level data on imprisonment status (prisoner versus non-prisoner), demographic characteristics (age, sex, and race), chronic medical conditions, smoking status, and obesity (determined by body-mass index). Additional information included patient-reported symptoms, vital signs, medications, laboratory findings, complications, and treatment outcomes. Reported clinical data were linked to inpatient encounters during which a patient tested positive for COVID-19, or first inpatient encounters that followed an out-of-hospital positive COVID-19 test. Upon hospitalization, COVID-19 testing was repeated to confirm diagnosis when initial positive COVID-19 testing could not be documented. Follow-up information was obtained by contacting patients, families, or nursing home facilities via phone. Prisoners' follow-up information was obtained by contacting the healthcare staff at the prison facilities.

**Outcome measures.** The prespecified primary outcomes for the study were in-hospital mortality, 14-day mortality and 30-day mortality in both prisoner and non-prisoner groups. Secondary outcomes include ICU admission rates, intubation rates, length of hospital stay (LOS), disposition status at discharge (home, nursing facility, or hospice home), and 30-day readmission rate for both prisoners and non-prisoners.

**Statistical analysis.** Characteristics of COVID-19 patients were compared according to imprisonment status (prisoners vs. non-prisoners). For continuous variables, measures are presented as means and standard deviations (SD) or medians and interquartile ranges (IQRs). Categorical measures are presented as percentages. Each outcome measure was assessed using unadjusted and adjusted models. Factors associated with inpatient mortality and intubation were examined with the use of multivariable logistic regression models. Factors associated with 30-day mortality were investigated with the Cox proportional-hazards models. Each of the primary outcomes was examined using three models: (i) model 1: included imprisonment status only, (ii) model 2: included imprisonment status, age, and sex, (iii) model 3: included model 2 variables, obesity, and Charlson Comorbidity Index (CCI) score. CCI score was calculated on the basis of 17 comorbid conditions, each of which is assigned a weighted score<sup>8</sup>. A higher score on the CCI indicates a greater comorbidity burden. All model covariates were selected a priori based on clinical relevance, demonstrated association with clinical outcomes in previous studies, or bivariate analyses with outcomes.

Data for intubation and in-hospital mortality were complete for the whole cohort; while data for 30-day mortality was missing for 9 patients, all from the non-prisoner group. Patients with missing 30-day mortality were not included in the Cox proportional-hazards models. Missing data for covariates were handled with the use of multiple imputation. Multiple imputation models incorporated all available baseline data. Results from the analyses of inpatient mortality and intubation are reported as odds ratios and results from the analyses of 30-day mortality are reported as hazard ratios. The proportional-hazards assumption for Cox models was investigated based on Schoenfeld residual method as well as graphically. Survival curves were plotted using the Kaplan–Meier method to compare 30-day mortality between the two groups. Log-Rank test was used to test equality of survival functions. A  $p$  value  $< 0.05$  was considered statistically significant. All statistical analyses were performed with the use of STATA 16 (State Corp LLC, College Station, Texas).

## Results

**Characteristics of the cohort.** The first case of COVID-19 among prisoners in Michigan was identified on March 22, 2020; while the first hospitalization for a prisoner in our hospitals was on March 25, 2020. A total of 706 consecutive patients with COVID-19 were included in the analyses. Of them, 108 patients (15.3%) were prisoners and 598 were non-prisoners. The mean age of patients in the cohort was  $66.7 \pm 16.1$  years, 56.5% were males (98.0% of prisoners were males), 44.3% were Black and 48.0% were Caucasians. Overall, prisoners had a higher CCI score (1.85 versus 1.57) and a higher prevalence of COPD, and underlying malignancies. While, non-prisoners were older (67.7 vs. 61.2 years) and had a higher prevalence of chronic kidney disease, obesity, and dementia. Comorbidities in both groups are detailed in Table 1.

**Clinical signs and laboratory findings.** The median time from self-reported onset of symptoms to admission was 6 (IQR: 3–8) days for prisoners and 5 (IQR: 2–8) days for non-prisoners. Compared to non-prisoners, prisoners had worse clinical signs at presentation, including fever (temperature  $\geq 38.0$  °C), hypoxemia (oxygen saturation  $< 94\%$ ), and tachypnea (respiratory rate  $> 24$ /minute). Further, prisoners had markedly higher levels of inflammatory markers upon admission, including CRP, ferritin, and LDH. Clinical signs and laboratory findings upon admission and during hospital course are detailed in Table S1.

**Medical treatment and hospital course.** During hospital course, 25.6% of patients did not require oxygen support, 41.6% required oxygen support delivered via conventional nasal cannula, 16.4% required high-flow nasal cannula, and 19.9% required intubation. Treatment protocol included anticoagulation (84.0%), corticosteroids (79.4%), antibiotics (46.2%) for prevention/treatment of secondary infections, and hydroxychloroquine (64.8%). Subcutaneous enoxaparin was the anticoagulant of choice in most patients (73%). Corticosteroids were in the form of intravenous methylprednisolone (1–2 mg/kg/day). Tocilizumab, an interleukin-6 inhibitor, was given to 7.2% of patients at a dose of 400 mg intravenously based on clinic criteria. Other treatment modalities include Remdesivir (compassionate use protocol) and Convalescent Plasma (part of Mayo Clinic's Expanded Access to Convalescent Plasma trial)<sup>9</sup>. Details of treatment modalities are shown in Table 2. Complications accompanying hospital course are shown in Table S2 (Supplement 1).

**Mortality outcomes.** In-hospital all-cause mortality was higher for prisoners compared to non-prisoners (29.6% vs. 20.1%) with an adjusted odds ratio of 2.32 (95% CI, 1.33 to 4.05;  $p=0.003$ ), Table 3. Mean time from admission to in-hospital death was  $12.9 \pm 6.6$  days for prisoners and  $10.4 \pm 7.7$  days for non-prisoners. Death within 30-day follow-up occurred in 34.3% of prisoners and 24.6% of non-prisoners (Fig. 1). In the adjusted time-to-event analyses (Table 3), prisoners had twice the hazard of 30-day mortality (hazard ratio 2.00; 95% CI, 1.33 to 3.00;  $p=0.001$ ). Mean time from admission to death was  $13.7 \pm 6.6$  days for prisoners and  $11.2 \pm 7.5$  for non-prisoners. Among patients requiring intubation, 30-day mortality was 59.7% with a striking differential in mortality based on imprisonment status. The 30-day mortality among intubated prisoners was 89% compared to 51% for non-prisoners (Fig. 2), with an age and gender-adjusted hazard ratio of 2.70 (95% CI, 1.54 – 4.68;  $P<0.001$ ). Variables associated with higher in-hospital and 30-day mortality (Table S4 in Supplement 1) were increasing age, male sex, Caucasian race, and increasing CCI. Imprisonment status was independently associated with increased risk of in-hospital death.

**Secondary outcomes.** A larger proportion of prisoners required admission to the ICU (26.9% vs. 18.7%) and more patients in the prisoners group required pressure support with vasopressors to non-prisoners (24.1% vs. 9.9%). Intubation and mechanical ventilation during hospital course was required in 25.0% of prisoners and 15.2% of non-prisoners (Table 2). In the multivariable logistic regression models, prisoners had higher odds of intubation compared to non-prisoners (odds ratio 1.66; 95% CI, 0.96 to 2.86;  $P=0.07$ ), Tables 3 and S3 (supplement 1). The median length of hospital stay was 8 (IQR: 5–12) days. For non-prisoners discharged alive, 75.8% were discharged to home and 20.0% to other facilities. For prisoners discharged alive, clinically stable prisoners were discharged to quarantine units within the prison facility (31.6%), while those requiring additional medical care (i.e., high oxygen requirement) were discharged to a prisoner-designated hospital (68.4%), operated by Michigan Department of Correction (Table 2).

## Discussion

Despite more than 300,000 reported cases in the U.S in 2020, no reports to-date have investigated clinical outcomes and mortality trends among prisoners hospitalized with COVID-19. In this study, we report our experience on the comparative outcomes of 108 prisoners and 698 non-prisoners hospitalized with COVID-19. Prisoner status was associated with approximately twice the risk of death compared to non-prisoners. Prisoners in our cohort presented from four local prisoner facilities located in Jackson and Coldwater City in Michigan. In these facilities, positivity for SARS-CoV-2 was reported to range between 38% (708 of 1,872 at one facility) and 55% (793 of 1,430 at another facility)<sup>7</sup>. However, precise estimation for hospitalization rates among COVID-19 positive prisoners was not feasible.

It is well-established that COVID-19 disease passes through three different phases: early infection phase, pulmonary phase, and hyperinflammation phase<sup>10</sup>. The third phase, which is characterized by severe inflammatory response (i.e., cytokine storm), appears approximately 10–12 days after the onset of illness with profound inflammatory profile and worsening hypoxemia<sup>10</sup>. In our cohort, prisoners were more likely to present with features consistent with this hyperinflammatory phase as evidenced by signs of Systemic Inflammatory Response Syndrome (SIRS), markedly elevated inflammatory markers, and severe hypoxemia on presentation.

	Prisoners (N = 108)	Non-prisoners (N = 598)	<i>p</i> value
Male, n. (%)	106 (98.2%)	293 (49.0%)	< 0.001
Age, years <sup>a</sup>	61.2 ± 12.5	67.7 ± 16.5	< 0.001
Age > 65 years	40 (37.0%)	337 (56.4%)	< 0.001
Body mass index (BMI), kg/m <sup>2</sup>	29.5 ± 5.8	30.4 ± 7.9	0.15
Obesity (BMI ≥ 30)	45 (41.7%)	276/595 (46.4%)	0.37
Morbid obesity (BMI ≥ 40)	5 (4.6%)	70/595 (11.8%)	0.03
Race <sup>a</sup>			
Caucasian	47 (43.5%)	285/583 (48.9%)	0.31
Black	54 (50.0%)	252/583 (43.2%)	
Others	7 (6.5%)	46/583 (7.9%)	
Smoking status <sup>a</sup>			
Non-smoker	19/96 (19.8%)	355/569 (62.4%)	< 0.001
Active smoker	3/96 (3.1%)	25/569 (4.4%)	
Former smoker	74/96 (77.1%)	189/569 (33.2%)	
Hypertension <sup>b</sup>	76 (70.4%)	438 (73.2%)	0.54
Dyslipidemia <sup>b</sup>	54 (50.0%)	347 (58.0%)	0.12
Coronary artery disease <sup>b</sup>	20 (18.5%)	117 (19.6%)	0.80
History of myocardial infarction <sup>b</sup>	15 (13.9%)	52 (8.7%)	0.09
History of congestive heart failure <sup>b</sup>	16 (14.8%)	98 (16.4%)	0.68
Peripheral vascular disease <sup>b</sup>	9 (8.3%)	38 (6.4%)	0.45
Cerebrovascular disease <sup>b</sup>	10 (9.3%)	70 (11.7%)	0.46
Chronic liver disease <sup>b</sup>	2 (1.9%)	14 (2.3%)	0.75
Chronic kidney disease <sup>b</sup>	11 (10.2%)	143 (23.9%)	0.002
Dialysis dependent	1 (0.9%)	14 (2.3%)	0.35
Kidney transplant	0 (0.0%)	6 (1.0%)	0.30
Type 2 diabetes mellitus (DM) <sup>b</sup>	39 (36.1%)	199 (33.3%)	0.53
Insulin-dependent DM	14 (12.9%)	51 (8.5%)	0.14
Complicated DM*	5 (4.6%)	68 (11.4%)	0.04
Malignancy <sup>b</sup>	10 (9.3%)	22 (3.7%)	0.01
Solid tumors	8 (7.4%)	15 (2.5%)	0.01
Leukemia/lymphoma	3 (2.8%)	7 (1.2%)	0.13
Dementia <sup>b</sup>	2 (1.9%)	108 (18.1%)	< 0.001
Hemiplegia <sup>b</sup>	1 (0.9%)	16 (2.7%)	0.28
HIV <sup>b,c</sup>	3 (2.8%)	3 (0.5%)	0.02
Hepatitis C <sup>b</sup>	4 (3.7%)	6 (1.0%)	0.03
Chronic lung disease <sup>b</sup>			
COPD <sup>b,c</sup>	40 (37.0%)	63 (10.5%)	< 0.001
Asthma	10 (9.3%)	65 (10.9%)	0.61
Sleep apnea	6 (5.6%)	73 (12.2%)	0.04
Interstitial lung disease	0 (0.0%)	7 (1.2%)	0.26
Pulmonary sarcoidosis	0 (0.0%)	5 (0.8%)	0.34
Oxygen dependent	6 (5.6%)	25 (4.2%)	0.52
CCI score	1.85 ± 2.02	1.57 ± 1.79	0.17

**Table 1.** Demographics and baseline characteristics for hospitalized COVID-19 positive patient, comparing prisoners to non-prisoners. Bold values indicates clinically significant *p* values (*p* value < 0.05). <sup>a</sup>Plus-minus values indicate means ± standard deviation (SD). Data for race and smoking status were missing for 15 and 41 patients, respectively. Race and smoking status were self-reported by the patients. <sup>b</sup>Absence of diagnoses recorded in the medical record was assumed to mean absence of the conditions. <sup>c</sup>HIV denotes Human Immunodeficiency Virus; COPD denotes chronic obstructive pulmonary disease.

These advanced features argue that the reported time from onset of symptoms to admission for prisoners (median of 6 days) was likely mis-reported in our cohort. Further, the worse clinical outcomes among prisoners are possibly a direct reflection of the late presentation to the hospital from prison facility – whether due to delayed reporting of symptoms by prisoners themselves or higher threshold of referral from prisoner to the hospital than that from the community.

The Michigan Department of Correction have adopted a pre-hospital scoring system to determine referral decisions<sup>11</sup>. The scoring system is based on age, vital signs, oxygen requirements, and mental status (Table S6 in

	Prisoners (N = 108)	Non-prisoners (N = 598)	p value
<b>Therapeutics and medications</b>			
Highest O <sub>2</sub> requirement			
Ambient air	16 (14.8%)	150 (25.1%)	<b>0.02</b>
Nasal cannula	23 (21.3%)	271 (45.3%)	< <b>0.001</b>
High-flow nasal cannula	38 (35.2%)	78 (13.0%)	< <b>0.001</b>
NIVM <sup>a</sup>	4 (3.7%)	7 (1.2%)	0.05
IMV <sup>a</sup>	27 (25.0%)	92 (15.4%)	<b>0.01</b>
Antibiotics	55 (50.9%)	271 (45.3%)	0.28
Corticosteroids	95 (88.0%)	466 (78.0%)	<b>0.02</b>
Anticoagulation	103 (95.4%)	490 (81.9%)	< <b>0.001</b>
Hydroxychloroquine	49 (45.4%)	409 (68.4%)	< <b>0.001</b>
Tocilizumab	17 (15.7%)	34 (5.7%)	< <b>0.001</b>
Remdesivir	2 (1.9%)	3 (0.5%)	0.81
Convalescent plasma	9 (8.3%)	7 (1.2%)	< <b>0.001</b>
Renal replacement therapy	6 (5.6%)	24 (4.0%)	0.46
Vasopressors	26 (24.1%)	59 (9.9%)	< <b>0.001</b>
ECMO <sup>a</sup>	0 (0.0%)	2 (0.3%)	0.55
<b>Clinical outcomes</b>			
Length of stay (days)	9 (5–14)	7 (5–12)	0.09
ICU admission <sup>a</sup>	29 (26.9%)	112 (18.7%)	0.05
Intubation	27 (25.0%)	91 (15.2%)	<b>0.01</b>
Inpatient mortality	32 (29.6%)	120 (20.1%)	<b>0.03</b>
14-day mortality <sup>b</sup>	21 (19.4%)	102 (17.1%)	0.60
30-day mortality <sup>b</sup>	37 (34.3%)	145 (24.6%)	<b>0.04</b>
30-day readmission <sup>b</sup>			
Readmitted	7/76 (9.2%)	65/478 (13.6%)	0.053
Not readmitted	69/76 (90.8%)	387/478 (81.0%)	
Unknown	0/76 (0.0%)	26/478 (5.4%)	
Disposition status <sup>c</sup>			
Home	–	363 (75.8%)	–
Other facilities	–	96 (20.0%)	
Hospice home	–	20 (4.2%)	

**Table 2.** Treatment, complications, and outcomes in patients hospitalized with COVID-19 (prisoners vs. non-prisoners). Bold values indicates clinically significant *p* values (*p* value < 0.05). <sup>a</sup>NIVM indicates non-invasive mechanical ventilation; IMV indicates invasive mechanical ventilation; ECMO indicates extracorporeal mechanical oxygenation; ICU indicates intensive care unit. <sup>b</sup>14-day mortality and 30-day mortality data were missing for 10 patients from the non-prisoner group. 30-day readmission data was missing for 26 patients from the non-prisoner group. Only patients who were discharged alive were included in calculating the 30-day readmission rate. <sup>c</sup>Disposition status percentages were calculated from the total number of patients discharged alive (479 in the non-prisoner group). Other facilities include skilled nursing facilities and rehabilitation facilities (short-term, long-term, and inpatient rehabilitation).

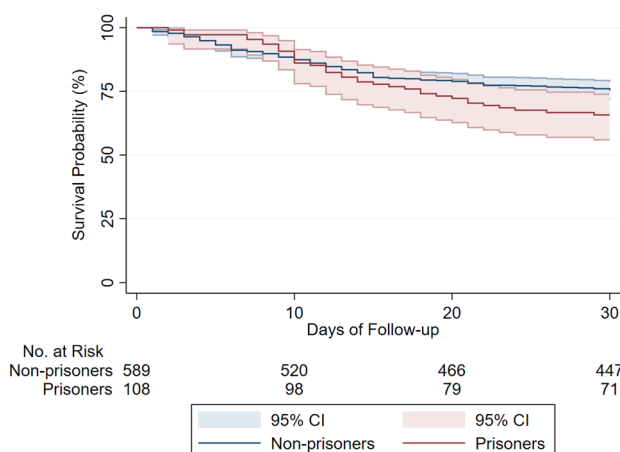
Supplement 1); only prisoners meeting the criteria of the scoring system were considered for transportation to the hospital. On the other hand, the need for supplemental oxygen was the primary deciding factor in admitting COVID-19 patients presenting from the community. Once hospitalized, both prisoners and non-prisoners were managed with similar treatment protocols, irrespective of their imprisonment status. Nonetheless, the pre-hospitalization treatment protocols adopted by the prison facilities remain unknown to us.

A higher percentage of prisoners than non-prisoners required admission to the ICU, pressure support with vasopressors, and intubation. For both in-hospital and 30-day mortality, prisoners had approximately 10% excess mortality rate than non-prisoners. Prisoners who required intubation had strikingly dismal outcomes with 30-day mortality approaching 89%. The discrepancy in mortality rates observed in the study population is multifactorial; while some are attributed to the demographic characteristics and underlying comorbidity burden, others are inherently unique to the imprisonment status. Incarcerated individuals bear a disproportionately higher burden of infectious diseases. Reports have estimated that 25% of all HIV/AIDS cases and 35% of all hepatitis C virus cases in the U.S are among incarcerated individuals<sup>12</sup>. Further, sepsis mortality rates were shown to be four times higher among prisoners to that for non-prisoners (42.5% vs. 15.3%)<sup>13</sup>.

In our cohort, prisoners were younger in age, predominantly males, and had higher prevalence of COPD, diabetes mellitus, underlying malignancies, and a higher CCI score. COPD was overrepresented among patients

30-day mortality <sup>a</sup>	HR (95% CI)	p value
Model 1	1.41 (0.98–2.03)	0.06
Model 2	1.96 (1.32–2.93)	0.001
Model 3	2.00 (1.33–3.00)	0.001
In-hospital mortality <sup>a</sup>	OR (95% CI)	p value
Model 1	1.68 (1.06–2.65)	0.03
Model 2	2.38 (1.37–4.12)	0.002
Model 3	2.32 (1.33–4.05)	0.003
Intubation <sup>a</sup>	OR (95% CI)	p value
Model 1	1.86 (1.14–3.03)	0.01
Model 2	1.64 (0.96–2.80)	0.07
Model 3	1.66 (0.96–2.87)	0.07

**Table 3.** Clinical outcomes (30-day mortality, in-hospital mortality, and intubation) for hospitalized COVID-19 positive prisoners compared to non-prisoners in the crude analysis (model 1) and multivariable analyses (models 2 and 3). <sup>a</sup>Model 1: Unadjusted-imprisonment status only model. Model 2: Adjusted for age and sex. Model 3: Adjusted for age, sex, race, Charlson Comorbidity Index (CCI), and obesity.

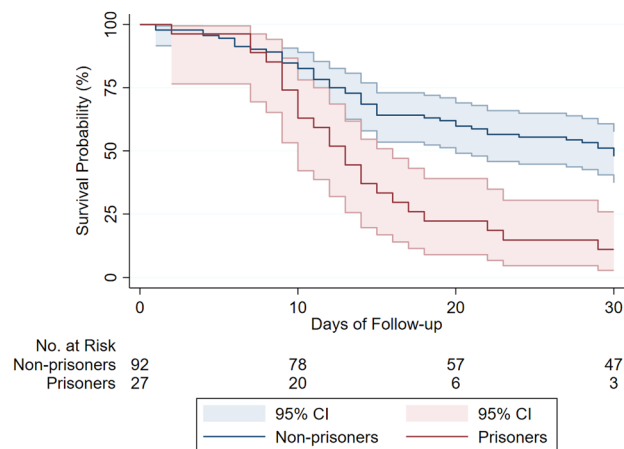


**Figure 1.** Survival curve for hospitalized COVID-19 positive patients, by imprisonment status. Survival curve shows all-cause mortality for prisoners and non-prisoners ( $n = 697$ ) hospitalized for COVID-19. Graph is based on a Cox proportional hazards model. Sample size provided reflects 30-day follow-up data availability; data for 30-day mortality was missing for 9 patients from the non-prisoner group. Shaded area represent pointwise 95% confidence interval. Log-Rank test for the survival curve had  $p$  value of 0.06.

included in this cohort (14.6%) as compared to a reported prevalence of 2–6% in large cohorts from New York, Louisiana, and China<sup>14–16</sup>. Moreover, a disproportionately larger percentage of prisoners had underlying COPD compared to non-prisoners (37.5 vs. 10.5%) – reflecting the higher prevalence of smoking in this group (80.1% were current or former smokers). Data on the association between COPD and disease severity in COVID-19 patients remains scarce. A meta-analysis of limited sample size suggests that COPD patients are at a substantially greater risk of more severe disease and mortality<sup>17</sup>. Nonetheless, the discrepancy in 30-day mortality in our cohort remained remarkable when comparing prisoner to non-prisoner patients without an underlying COPD (29.4% and 23.2%, respectively). Of interest, patients in our cohort have higher prevalence of obesity (defined as BMI  $\geq 30$  kg/m<sup>2</sup>) in both prisoner and non-prisoner groups (42% vs. 46%). In meta-analysis studies, obesity was strongly associated with poor outcomes in hospitalized COVID-19 patients, including an increased risk for severe disease course, ICU admission, mechanical ventilation, and death. Such high prevalence of obesity adds to the comorbid conditions contributing to the relative high mortality rate in the cohort (30-day all-cause mortality of 26%)<sup>18,19</sup>.

Studies have determined age to be the most significant risk factor for severe COVID-19 infection<sup>20</sup>. In our cohort, prisoners were proportionally younger than non-prisoners, but interestingly they had worse clinical outcomes overall. Further, the overwhelming majority of prisoners in our cohorts were males (98.2%). Sex-disaggregated epidemiologic data across 38 countries have shown a significantly higher case-fatality rates for COVID-19 among males<sup>21</sup>. Females have stronger innate, humoral, and cellular immunity resulting in sex-specific outcomes from viral infections<sup>22,23</sup>. In animal models of mice infected with SARS-CoV-1, higher susceptibility to SARS-CoV-1 infection and greater infiltration of neutrophils and macrophages into the lungs were observed in male





**Figure 2.** Survival curve for intubated COVID-19 patients, by imprisonment status. Survival curve shows all-cause mortality for prisoners and non-prisoners requiring intubation ( $n = 119$ ). Graph is based on a Cox proportional hazards model. Data on intubation status was complete for all study participants. Data for 30-day mortality was complete for all intubated patients. Shaded area represent pointwise 95% confidence interval. Log-Rank test for the survival curve had  $p$  value of  $< 0.001$ .

mice<sup>24</sup>. Further, ovariectomized and estrogen receptor antagonist-treated female mice had increased mortality from SARS-CoV-1 infection<sup>24</sup>. These findings of sex-based differences in immune response and susceptibility can partially explain the excess mortality from COVID-19 among prisoners.

The study has several limitations. First, the observational study design makes selection bias inevitable, especially considering the potential discrepancy in hospital referral and admission threshold between the two study groups. However, our findings remained largely consistent after controlling for potential confounders related to demographics, comorbidities, clinical signs, and markers of disease severity. Second, the study population was limited to one healthcare system in Michigan admitting patients from certain prisons and communities, and therefore external generalizability requires validation. Finally, presented findings were based on data extracted from the electronic medical records of the health system, and hence, is subjected to the accuracy of documentation by the healthcare team, but the outcomes were adjudicated and all patients discharged alive were contacted directly or through their healthcare office.

In conclusion, our study provides insight into the disparity in clinical outcomes among prisoners hospitalized with COVID-19. With COVID-19 becoming one of the leading causes of death in the U.S., findings on the association between imprisonment and COVID-19 mortality are alarming. Responding to the outbreaks in incarceration facilities is uniquely challenging and failure to mount an adequate response to ameliorate COVID-19 outbreaks in U.S. prisons has the potential to compromise the well-being of prisoners, correctional workforce, and people living in the communities in which prisons are located. Since physical distancing, the most effective mitigative measure, is constantly violated by prisons overcrowding, major shift in policy towards enforcing ‘mass testing and segregation’ and prisons depopulation (i.e., drastically reduce the population of prisoners) might be warranted to abort further imminent outbreaks<sup>1</sup>. Nonetheless, maintaining the rights of prisoners for timely, adequate, and equitable healthcare services is indispensable to close the gap in COVID-19 clinical outcomes with the general population.

Received: 10 November 2020; Accepted: 8 March 2021

Published online: 22 March 2021

## References

- Akiyama, M. J., Spaulding, A. C. & Rich, J. D. Flattening the curve for incarcerated populations—Covid-19 in jails and prisons. *N. Engl. J. Med.* **382**(22), 2075–2077 (2020).
- Hawks, L., Woolhandler, S. & McCormick, D. COVID-19 in prisons and jails in the United States. *JAMA Intern. Med.* **180**(8), 1041–1042 (2020).
- A State-by-State Look at Coronavirus in Prisons | The Marshall Project [Internet]. [cited 2020 Jun 22]. Available from: <https://www.themarshallproject.org/2020/05/01/a-state-by-state-look-at-coronavirus-in-prisons#>.
- Saloner, B., Parish, K., Ward, J. A., DiLaura, G. & Dolovich, S. COVID-19 Cases and Deaths in Federal and State Prisons. *JAMA* [Internet]. 2020 July 8 [cited 2020 Jul 9]; Available from: <http://www.ncbi.nlm.nih.gov/pubmed/32639537>.
- Tomes, N. “Destroyer and teacher”: managing the masses during the 1918–1919 influenza pandemic. *Public Health Rep.* **125**(Suppl 3), 48–62 (2010).
- Tabata, S. *et al.* Clinical characteristics of COVID-19 in 104 people with SARS-CoV-2 infection on the Diamond Princess cruise ship: a retrospective analysis. *Lancet Infect. Dis.* **20**(9), 1043–1050 (2020).
- Coronavirus - MDOC Completes Testing of Every Prisoner in System Assistance from the Michigan National Guard “Invaluable” [Internet]. [cited 2020 Jun 22]. Available from: <https://www.michigan.gov/coronavirus/0,9753,7-406-98158-530189--,00.html>.

8. Charlson, M. E., Pompei, P., Ales, K. L. & MacKenzie, C. R. A new method of classifying prognostic comorbidity in longitudinal studies: development and validation. *J. Chronic Dis.* **40**(5), 373–383 (1987).
9. Expanded Access to Convalescent Plasma for the Treatment of Patients With COVID-19—Full Text View—ClinicalTrials.gov [Internet]. [cited 2020 Jun 25]. Available from: <https://clinicaltrials.gov/ct2/show/NCT04338360>.
10. Khadke, S. *et al.* Harnessing the immune system to overcome cytokine storm and reduce viral load in COVID-19: a review of the phases of illness and therapeutic agents. *Virology* **17**(1), 154 (2020).
11. Liao, X., Wang, B. & Kang, Y. Novel coronavirus infection during the 2019–2020 epidemic: preparing intensive care units—the experience in Sichuan Province, China. *Intensive Care Med.* **46**, 357–360 (2020).
12. London, A. S. & Myers, N. A. Race, incarceration, and health—a life-course approach. *Res. Aging* **28**(3), 409–422. <https://doi.org/10.1177/0164027505285849> (2006).
13. Chertoff, J., Stevenson, P. & Alnuaimat, H. Prisoners in the United States likely to have higher odds of death from sepsis. *Chest* **152**(3), 682–683 (2017).
14. Richardson, S. *et al.* Presenting characteristics, comorbidities, and outcomes among 5700 patients hospitalized with COVID-19 in the New York City area. *JAMA* **323**(20), 2052–2059 (2020).
15. Price-Haywood, E. G., Burton, J., Fort, D. & Seoane, L. Hospitalization and mortality among black patients and white patients with Covid-19. *N. Engl. J. Med.* **382**(26), 2534–2543 (2020).
16. Guan, W.-J. *et al.* Clinical characteristics of coronavirus disease 2019 in China. *N. Engl. J. Med.* **382**(18), 1708–1720 (2020).
17. Alqahtani, J. S. *et al.* Prevalence, severity and mortality associated with COPD and smoking in patients with COVID-19: a rapid systematic review and meta-analysis. *PLoS ONE* **15**(5), e0233147 (2020).
18. Malik, P. *et al.* Obesity a predictor of outcomes of COVID-19 hospitalized patients—a systematic review and meta-analysis. *J. Med. Virol.* **93**(2), 1188–1193 (2021).
19. Huang, Y. *et al.* Obesity in patients with COVID-19: a systematic review and meta-analysis. *Metabolism* **113**(2), 154378 (2020).
20. Mahase, E. Covid-19: Why are age and obesity risk factors for serious disease? *BMJ*. **371**, m4130. <https://doi.org/10.1136/bmj.m4130> (2020).
21. COVID-19 sex-disaggregated data tracker—Global Health 50/50 [Internet]. [cited 2020 Jun 29]. Available from: <https://globalhealth5050.org/covid19/sex-disaggregated-data-tracker/>.
22. Klein, S. L. & Flanagan, K. L. Sex differences in immune responses. *Nat. Rev. Immunol.* **16**(10), 626–638 (2016).
23. Klein, S. L., Jedlicka, A. & Pekosz, A. The Xs and Y of immune responses to viral vaccines. *Lancet Infect. Dis.* **10**(5), 338–349 (2010).
24. Channappanavar, R. *et al.* Sex-based differences in susceptibility to SARS-CoV infection. *J. Immunol.* **198**(10), 4046–4053 (2018).

## Acknowledgements

We thank Hospital Medicine staff, Intensive Care Unit (ICU) staff, Emergency Medicine staff, Advanced Practice Providers, nursing staff, medical assistants, and ancillary staff at Henry Ford West Bloomfield and Henry Ford Allegiance Hospitals, including: Anish Wadhwa, MD; Richard Santos, MD PhD; James Chauncey, MD; Rami Alzebedeh, MD; Yasser Aleech, MD; Imran Tarrar, MD; Sairia Dass, MD; Chidamber Alamelumagapuram, MD; Rahman Akhil, MD; Kamelia Albujoq, MD; Dominik Starosta, MD; Monika Grewal, MD; Angela Eke-Usim, MD; Amy Beaulac, MD; Tricia Stein, MD; Steven Rockoff, DO; Linoj Samuels, PhD; Beverly Duthie, NP; Victoria Churchill, NP; and Alex Wells, MPH. We also thank Dr. Craig Hutchinson (Corizon Health) for his contribution. We also thank Dr. E. John Orav, PhD (Department of Biostatistics, Harvard University) and Dr. Heather J. Baer, ScD (Department of Epidemiology, Harvard University) for their support.

## Author contributions

Dr. A.M.A. has contributed to the study design, study conduct, statistical analysis, and manuscript writing. Dr. A.M.A. is responsible for the overall content as guarantors and accepts full responsibility for the work and conduct to the study and has access to the data. The following authors have contributed significantly to the chart review and data collection process: H.L., A.A.S., R.S., L.A.J., M.E.G., A.L., E.A., L.R.R., S.J., N.S., Drs B.P., A.M., and V.K. have contributed to the study design, monitoring integrity of data, supervising the overall progress and quality of the study, and reviewed the manuscript of the study.

## Funding

All authors have completed the ICMJE uniform disclosure form at [www.icmje.org/coi\\_disclosure.pdf](http://www.icmje.org/coi_disclosure.pdf) and declare: no support from any organization for the submitted work; no financial relationships with any organizations that might have an interest in the submitted work in the previous three years; no other relationships or activities that could appear to have influenced the submitted work. Dr. Ahmad Masri received Grants from Pfizer and Akcea (paid to OHSU) that is not related to this work.

## Competing interests

The authors declare no competing interests.

## Additional information

**Supplementary Information** The online version contains supplementary material available at <https://doi.org/10.1038/s41598-021-85916-w>.

**Correspondence** and requests for materials should be addressed to V.K.

**Reprints and permissions information** is available at [www.nature.com/reprints](http://www.nature.com/reprints).

**Publisher's note** Springer Nature remains neutral with regard to jurisdictional claims in published maps and institutional affiliations.



**Open Access** This article is licensed under a Creative Commons Attribution 4.0 International License, which permits use, sharing, adaptation, distribution and reproduction in any medium or format, as long as you give appropriate credit to the original author(s) and the source, provide a link to the Creative Commons licence, and indicate if changes were made. The images or other third party material in this article are included in the article's Creative Commons licence, unless indicated otherwise in a credit line to the material. If material is not included in the article's Creative Commons licence and your intended use is not permitted by statutory regulation or exceeds the permitted use, you will need to obtain permission directly from the copyright holder. To view a copy of this licence, visit <http://creativecommons.org/licenses/by/4.0/>.

© The Author(s) 2021